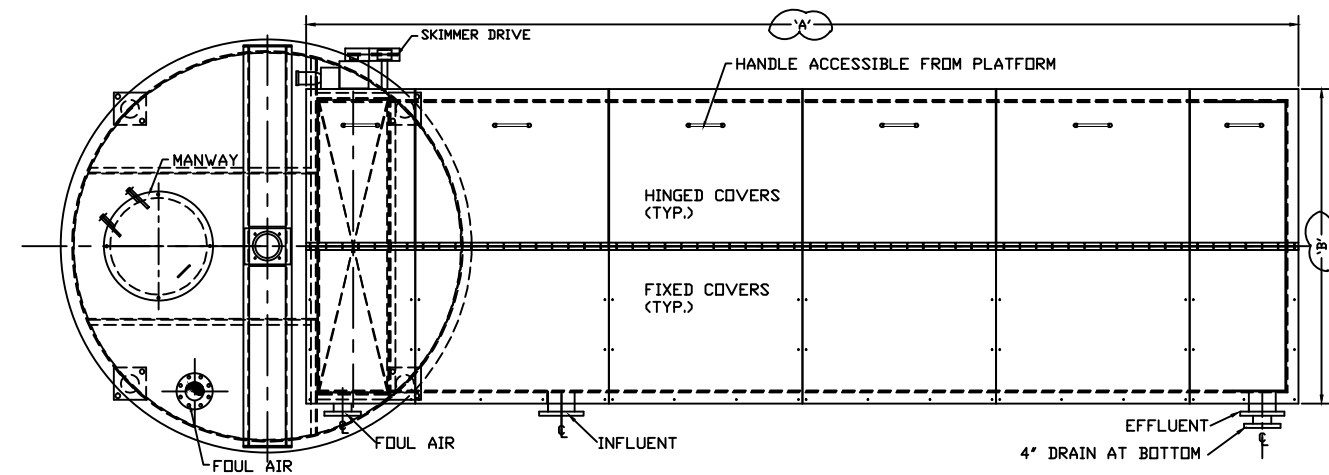
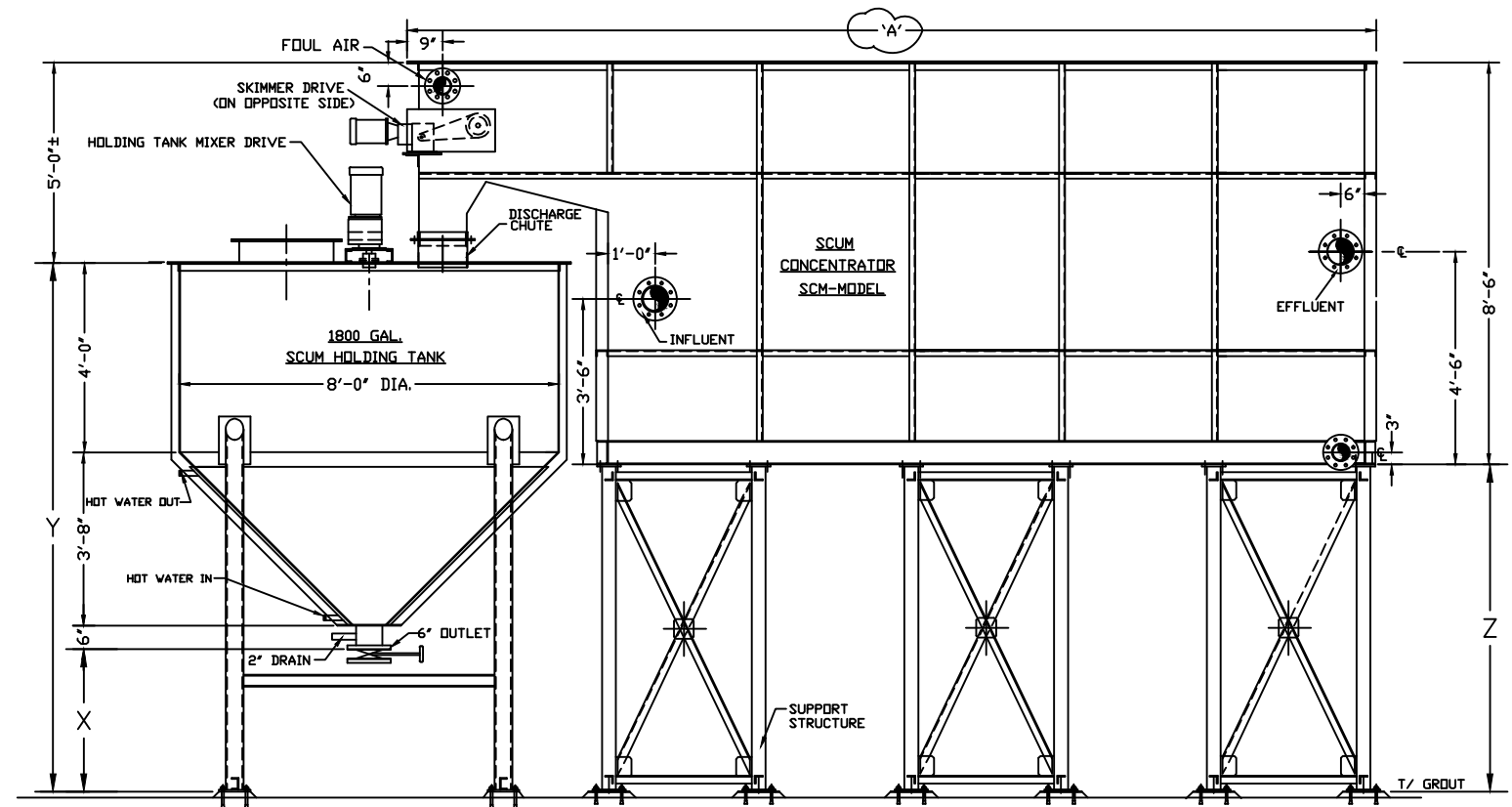


MODEL NO.	FLOW	'A'	'B'
SCM-060020	200 GPM	20'-6"	6'-6"
SCM-075024	300 GPM	24'-6"	8'-0"
SCM-085027	400 GPM	27'-6"	9'-0"



PLAN



ELEVATION

DO NOT SCALE

NOTE :

SPACE UNDER SCUM HOLDING TANK OUTLET (DIMENSION 'X'), AS REQUIRED FOR INSTALLATION OF SPECIFIED CONCENTRATED SCUM PUMP, PIPING AND ACCESSORIES.

DIMENSION 'X' MUST BE DEFINED BEFORE DIMENSIONS 'Y' AND 'Z' CAN BE CALCULATED.



TENCO HYDRO, INC. *Industrial/Municipal Wastewater Equipment*

4620 Forest Avenue, Brookfield, Illinois 60513/Telephone: (708) 387-0700

THIS PRINT IS THE PROPERTY OF TENCO HYDRO INC. AND REPRESENTS ITS TECHNOLOGY. IT CANNOT BE USED, LOANED, COPIED, OR REPRODUCED IN ANY MANNER WITHOUT WRITTEN AUTHORIZATION. IT MUST BE RETURNED UPON NOTICE.

DRAWN J. T. M
 CHK'D
 DATE 4-14-2015
 SCALE NONE
 JOB NO. SALES

TITLE
SCUM CONCENTRATOR SYSTEM
 DRAWING NO. SCM-MODELS
 REV.

MK	DATE	DESCRIPTIONS	BY
REVISIONS			