



TENCO HYDRO, INC.

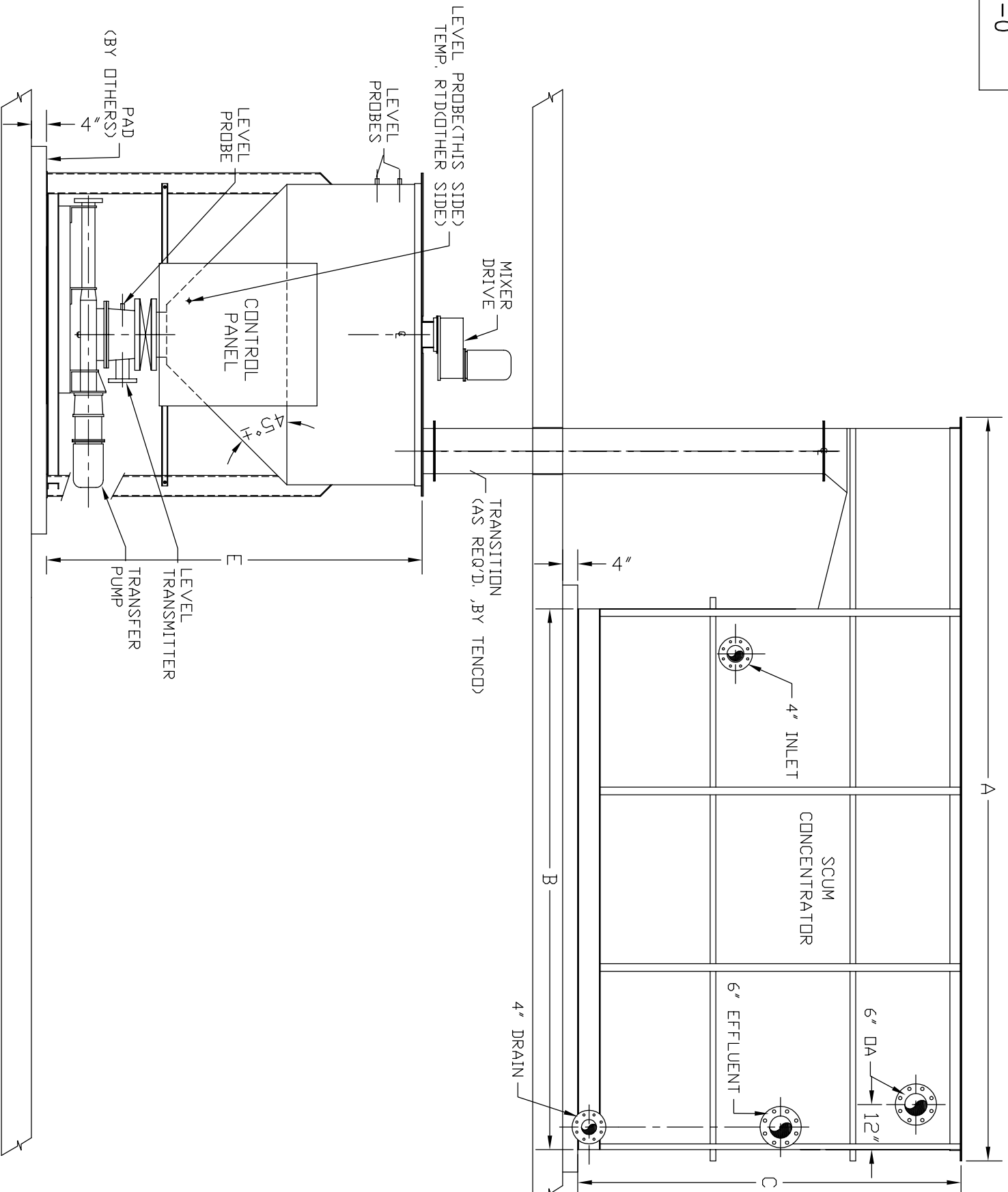
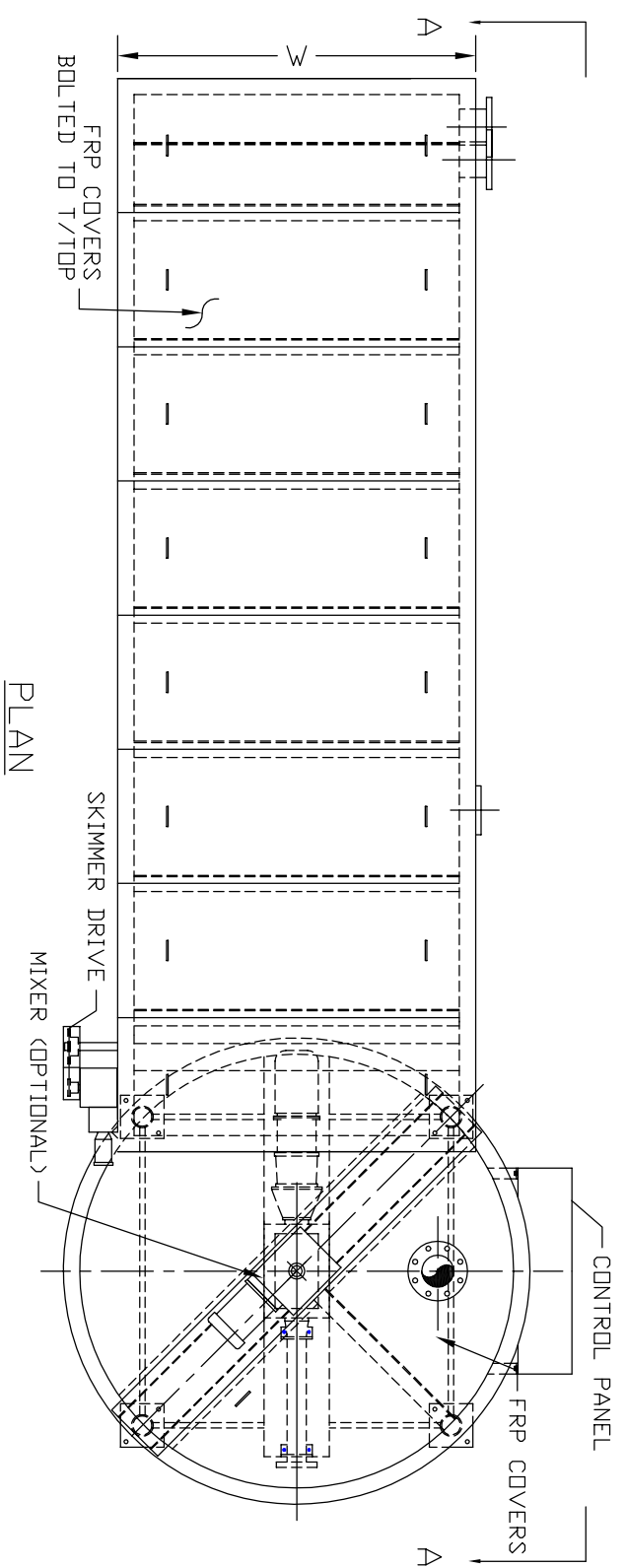
PROJECT NO. _____						
UNIT	A	B	C	D	E	W
SCM-040016	16'-6"	12'-0"	8'-6"			4'-6"
SCM-050016						5'-6"
SCM-075022	22'-3"	18'-2"	8'-0"			8'-0"

**SCUM CONCENTRATOR TANK**

FLOW RATE \_\_\_\_\_ GPM  
 HYDRAULIC LOADING RATE \_\_\_\_\_ GPM/SQ. FT.  
 RETENTION TIME \_\_\_\_\_ MIN.  
 SKIMMER DRIVE HP \_\_\_\_\_ V / \_\_\_\_\_ pH / \_\_\_\_\_ Hz.

**SCUM HOLDING TANK**

CAPACITY \_\_\_\_\_ GALLONS  
 DIAMETER \_\_\_\_\_ HEIGHT \_\_\_\_\_  
 HEAT SOURCE: \_\_\_\_\_ HOT WATER, \_\_\_\_\_ STEAM, \_\_\_\_\_ ELECTRIC  
 MIXER RPM \_\_\_\_\_ HP, \_\_\_\_\_ V / \_\_\_\_\_ pH / \_\_\_\_\_ Hz



TENCO HYDRO, INC.

Scum Concentrator